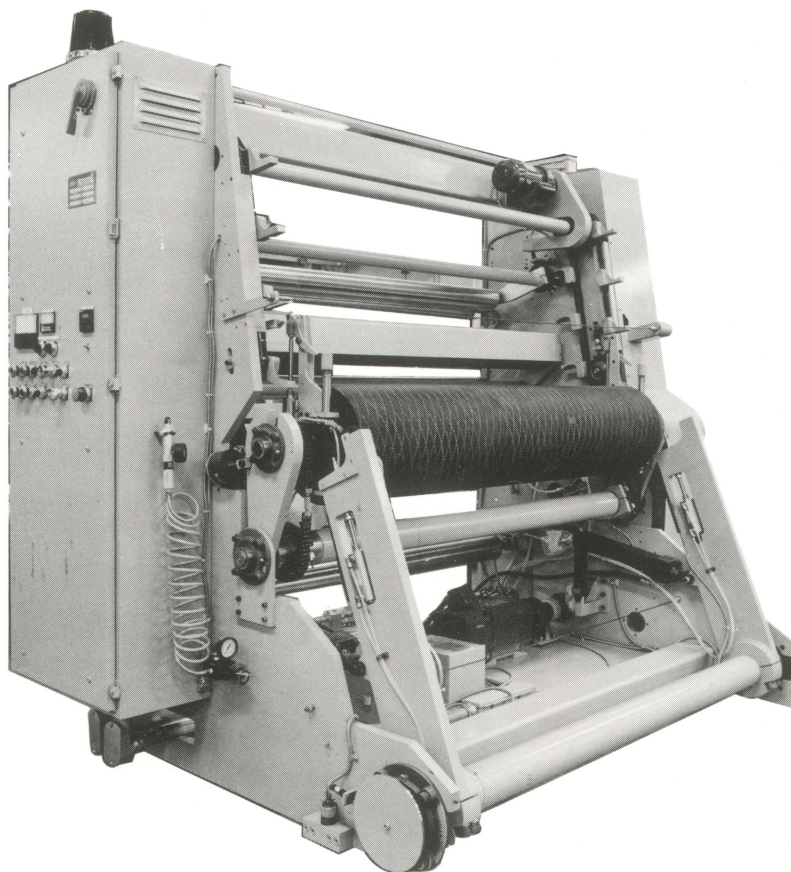




# MODEL 1000 Winder



The Model 1000 winder is a durable, shafted, surface winder capable of winding multiple rolls up to 60 inches in diameter. It is a single position machine designed to wind sheeting or tubing to converter quality standards. Surface winding technique provides a very broad speed range, jumbo roll capabilities and consistent wound-in tension for high slip and high tach films.

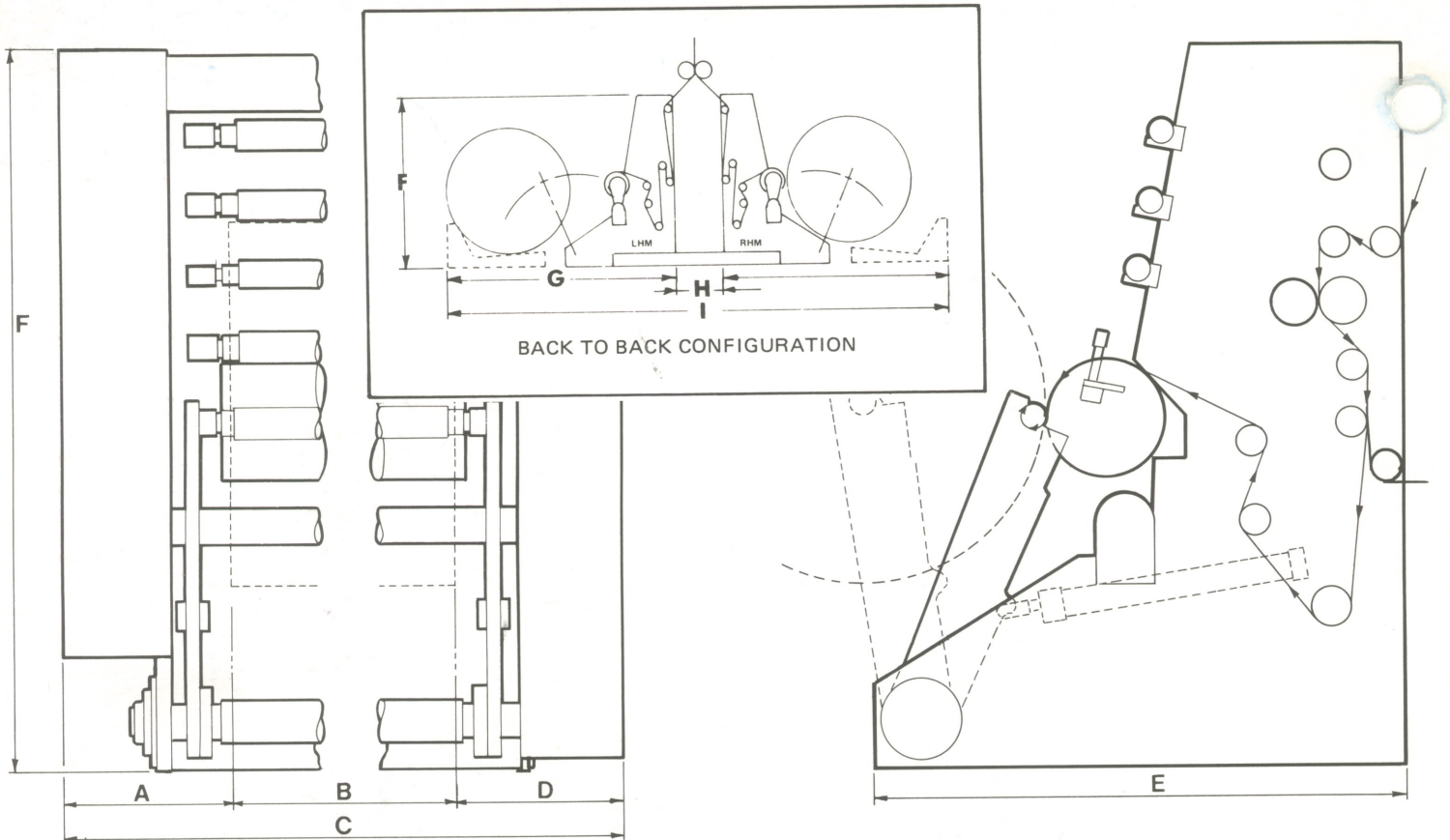
## FEATURES:

- Rigid, durable construction
- Programmable logic control
- Automatic transfer (counter or operator initiated)
- Load cell tension control and monitoring

## BENEFITS:

- Improved edge and center slitting at high speeds due to mechanical stability and reduced vibration.
- Maintains alignment in the production environment for increased service life.
- Software logic provides efficient, simple, and compact design compared to hardware logic.
- Increased uptime and reliability due to simplified diagnostics.
- Improved automation provides faster product handling, improved operator safety and consistent roll lengths.
- Improved processing from more more accurate and repeatable web tension control.
- Improved winding quality from lower winding tension compared to dancer control.
- Easier threadup due to shorter web path.

## Dimensions:



	A	B	C	D	E	F	G	H	I
Inches	20	roll width	MS + 38	18	54	84	111.	24	246
Millimeters	508	roll width	MS + 965	457	1372	2134	2819	610	6248

MS = 62 to 102 inches (in 10 inch increments)

MS = 1575 to 2591 millimeters (in 254 millimeters increments)

NOTE: Subtract 2 inches (50.8 millimeters) from machine size for roll width

## Options:

- Pneumatic slitter assemblies
- Pneumatic winding shafts
- Gap winding
- Taper tension
- Slit seal units
- Off load ramp

## Specifications:

Winder Type:	Shafted DC drive surface wind
Machine Size:	54 to 104 inches (1370 to 2640 mm)
Max. Roll Width:	50 to 100 inches (1270 to 2540 mm)
Max. Roll Dia.:	60" inches (1524 mm)
Max. Line Speed:	500 fpm (152.5 mpm)
Max. Roll Weight:	7000 lbs. (3175 kg.)
Idler Roll Dia.:	3.5 inches (89 mm)
Core Size(s):	3.0, 6.0, 8.0 inch (75, 150, 203 mm)
Air Required:	80 PSI (5.5 bar) plant air
Power Required:	230 or 460/3/60
Type of Transfer:	Automatic or manual

**Battenfeld  
Gloucester**  
Engineering Co., Inc.



Blackburn Industrial Park  
P.O. Box 900/Gloucester, MA 01931-0900  
USA/Telephone 508-281-1800  
Telex 940-333/Fax 508-283-9206